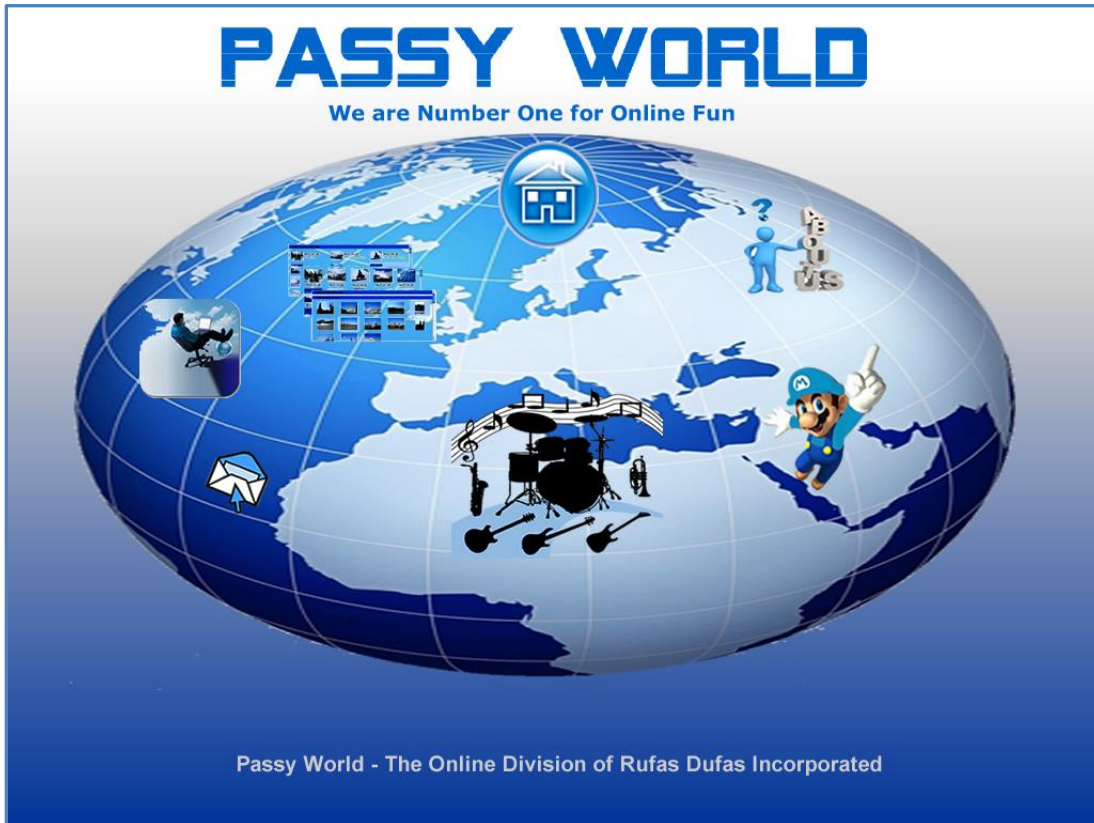


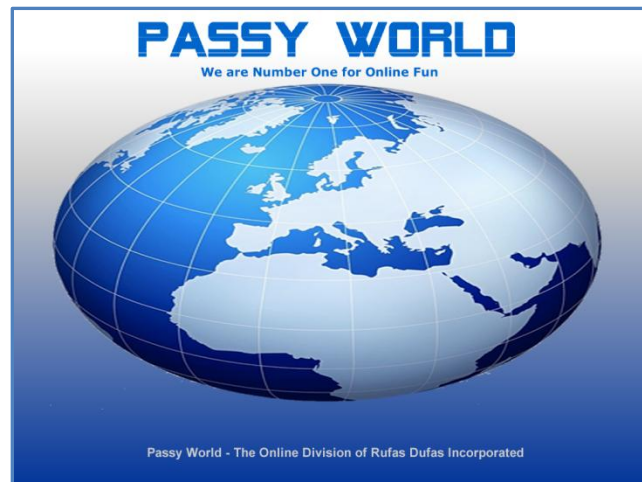
HOW TO MAKE A HOMEPAGE IN DREAMWEAVER

We have already made a design for our Homepage using Adobe CS3 Fireworks. This design is shown below. The intention is to be able to mouse over each of the images. Each image will have an alternate Rollover Image (that is pink in color). When we click a rolled over active image, it will take us to the appropriate page:

Home, Contact Us, Our Pictures, Games, Music, Our Blog, About Us.



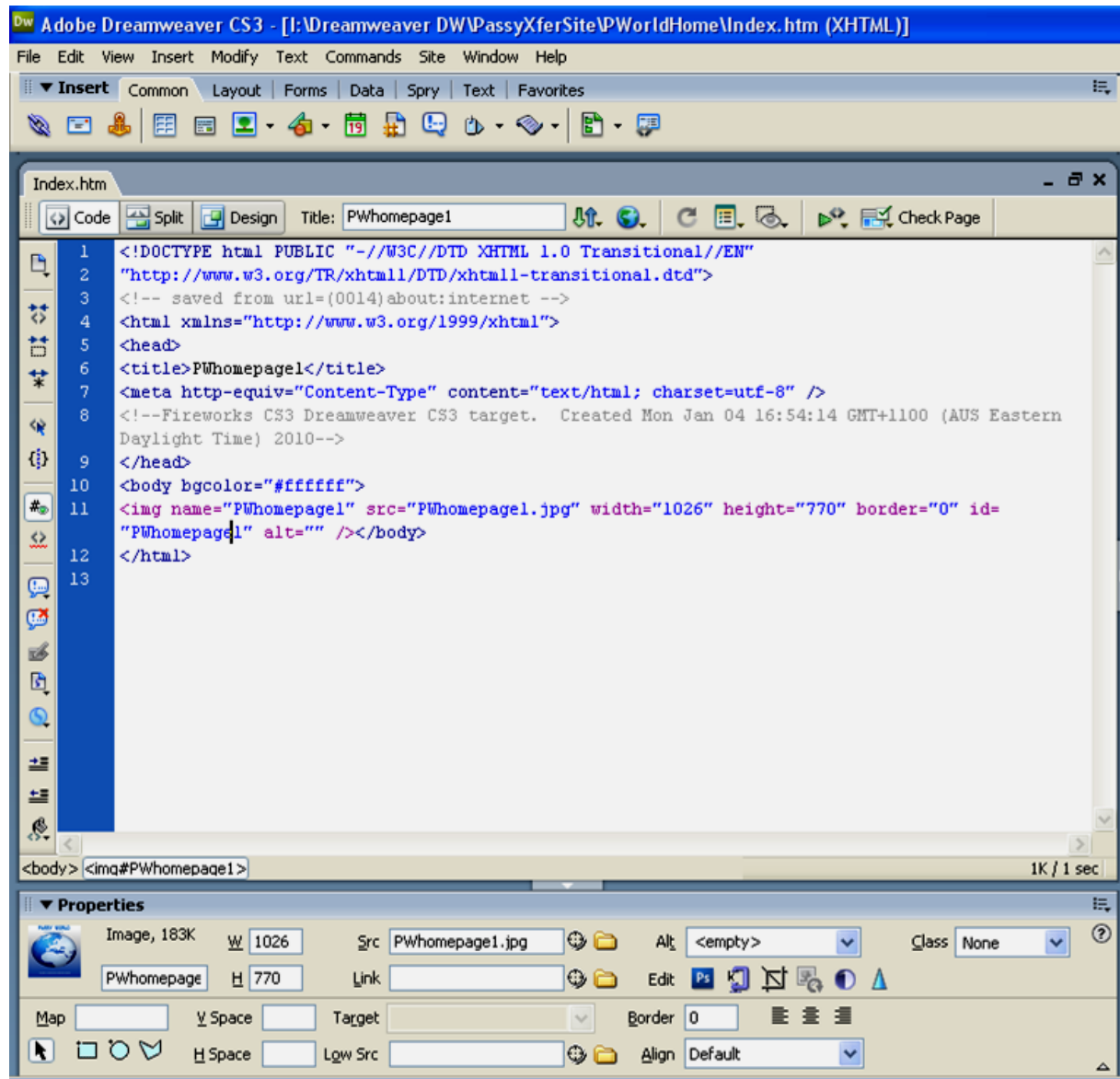
Using Fireworks, we have created a background 1024x768 Image that is the Homepage without any of the clickable images on it, (called "PWhomepage1.jpg"), like this:



HOW TO MAKE A HOMEPAGE IN DREAMWEAVER

We have used Fireworks to Export out some HTML that displays this background page for us. This HTML code will be what we will use as our start file in Dreamweaver.

We have renamed the generated HTML file as index.html ready for it to be a homepage. The code is quite simple, and displays a .jpg image that needs to be placed in the same folder as the HTML code. (Fireworks created this JPG image from our .png image).

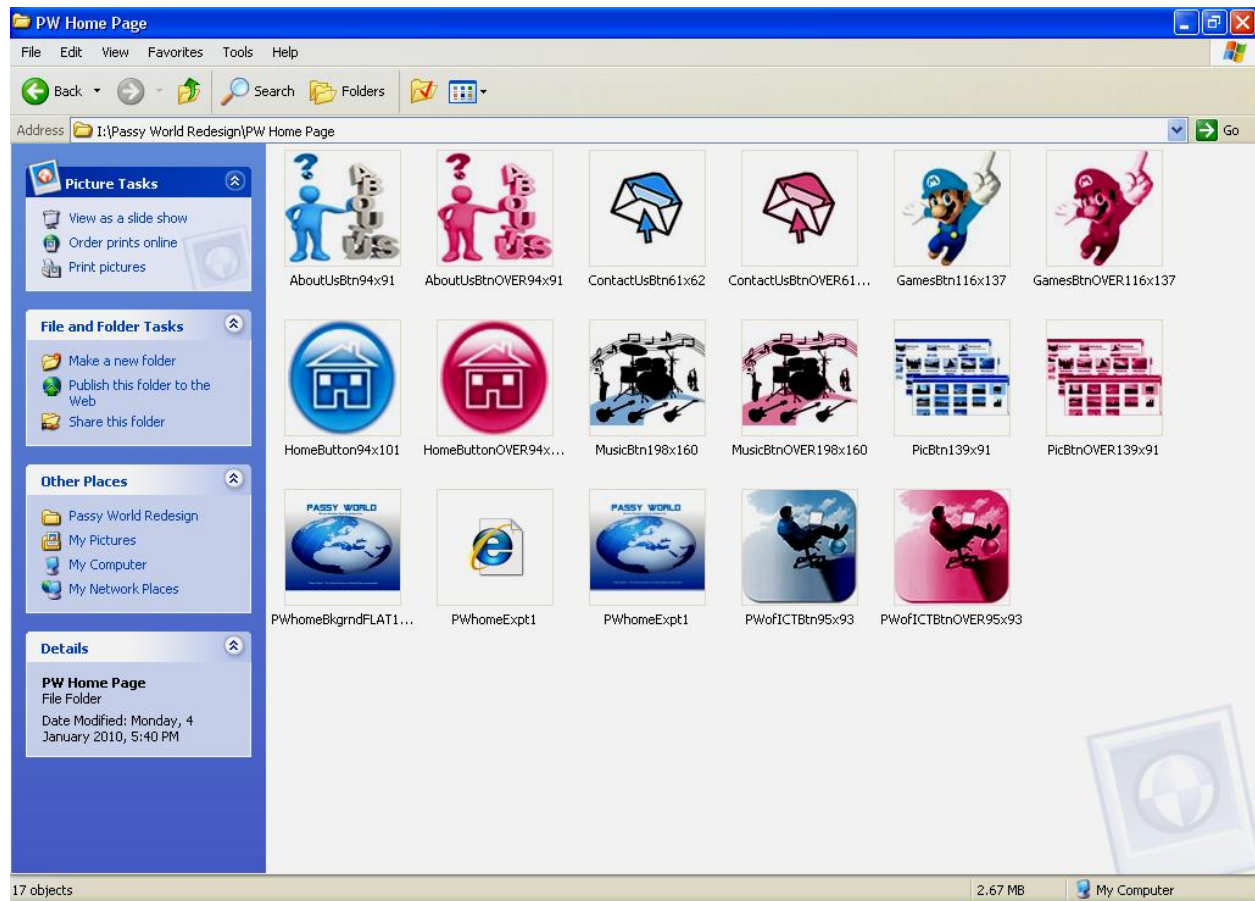


The plan is to now add to this homepage some "Divs" or movable box shaped containers. There will be one "Div" container for each of our link images, and these divs will need to be the exact same size as our images.

We planned ahead in Fireworks, and made sure that we put the size of the image as

HOW TO MAKE A HOMEPAGE IN DREAMWEAVER

part of its name. Eg. “PWoflCTBtn95x93.png” means that this image is 95 pixels by 93 pixels. For each normal blue colored image, we have also used Fireworks styling filters to make a separate pink colored Rollover image.



We shall start with the blue “PWoflCTBtn95x93.png” image which is going to be an Image to link to Our Blog. The pink Rollover image is : “PWoflCTBtnOVER95x93.png”

Placing the Image onto our Homepage, and then converting it to a Rollover link image is a two step process in Dreamweaver.

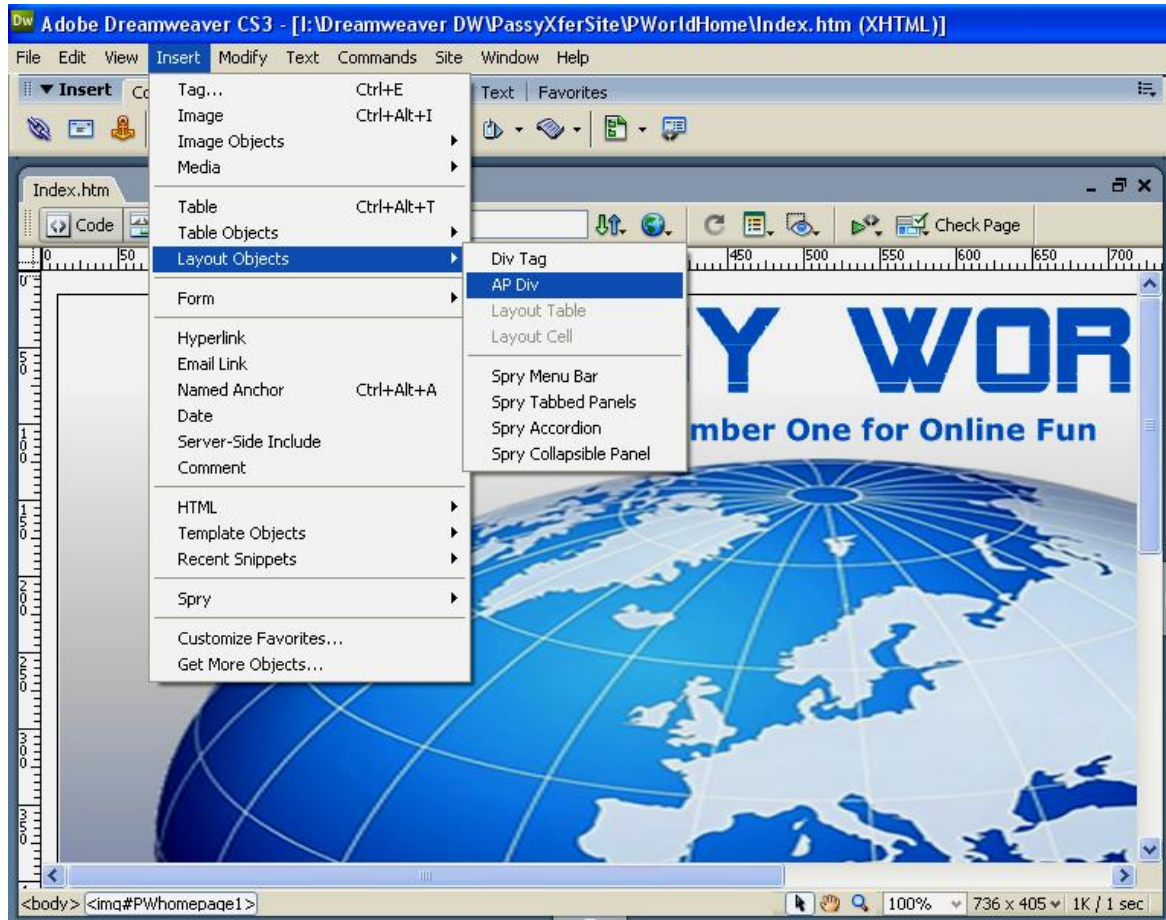
- First we insert a “Div” container onto the page that is the same size as the Image. We then move the Div box to the required position using the mouse.
- We then insert the Image into its Div box, and set it up to be a Rollover link.

At present we have not built our other web pages, and so we will make all of our Rollover images link to an “Under Construction” page.

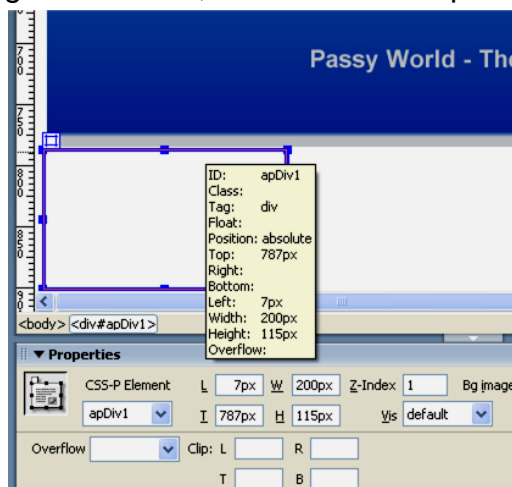
HOW TO MAKE A HOMEPAGE IN DREAMWEAVER

Inserting a Div onto a Page

In Design View in Dreamweaver, do **Insert > Layout Objects > AP Div**



The Div box is inserted at the very bottom of our page, and we have to move our mouse till we get the cross arrows symbol showing. We then push down the mouse button to grab hold of it, and move it into position:

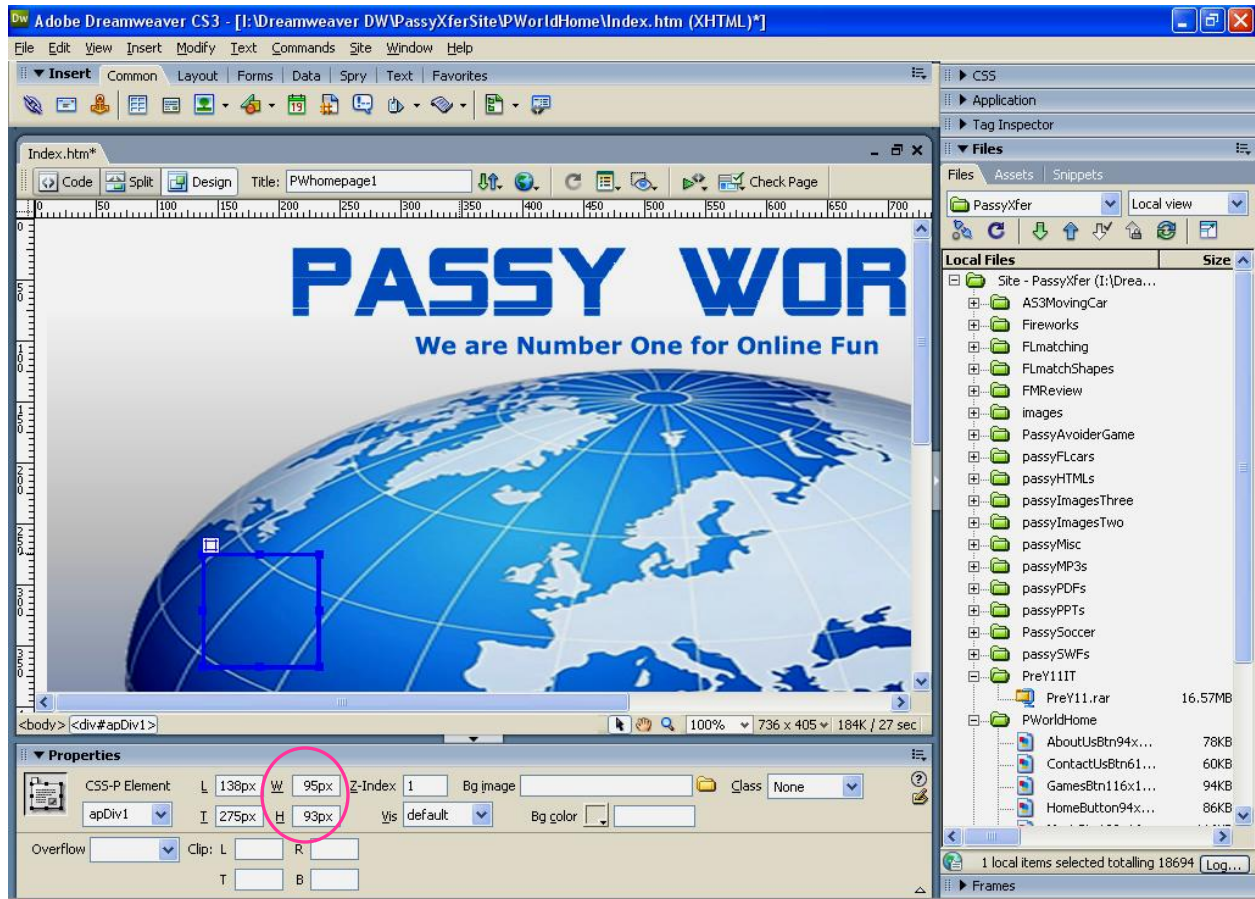


The properties inspector is shown at the bottom of the DW screen. (Do top of screen **Window > Properties** to get it displayed if it is not there).

Part of the properties are the Width "W" and the Height "H". The number values in these boxes need to be changed to match the size of the image we are going to place in the Div.

HOW TO MAKE A HOMEPAGE IN DREAMWEAVER

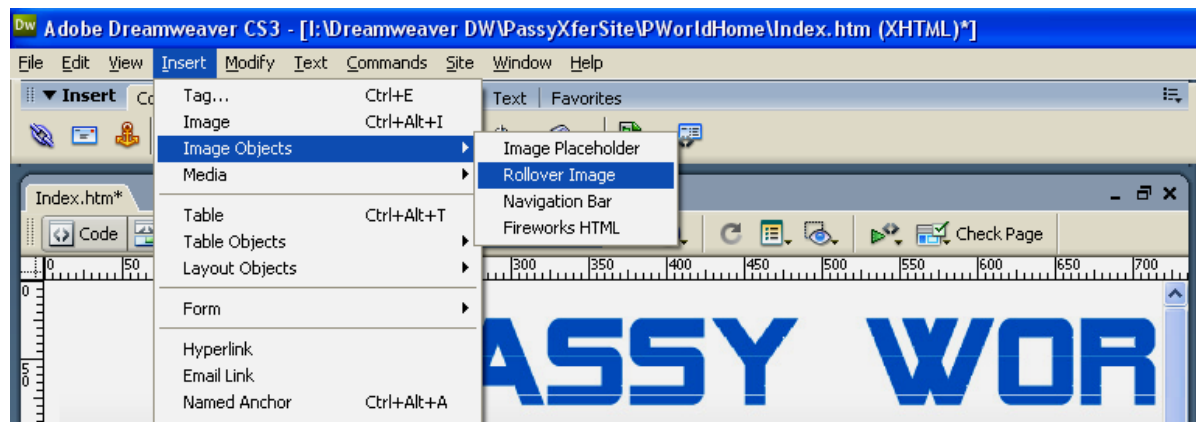
For the “PWoflCTBtn95x93.png” image which is going to be an Image to link to Our Blog, we have made the Div have properties of W=95 and H=93. We have also moved the Div to where we want it as per our original design.



Creating the Rollover Image inside the Div

We now click inside the Div so that a big yellow vertical flashing line cursor appears.

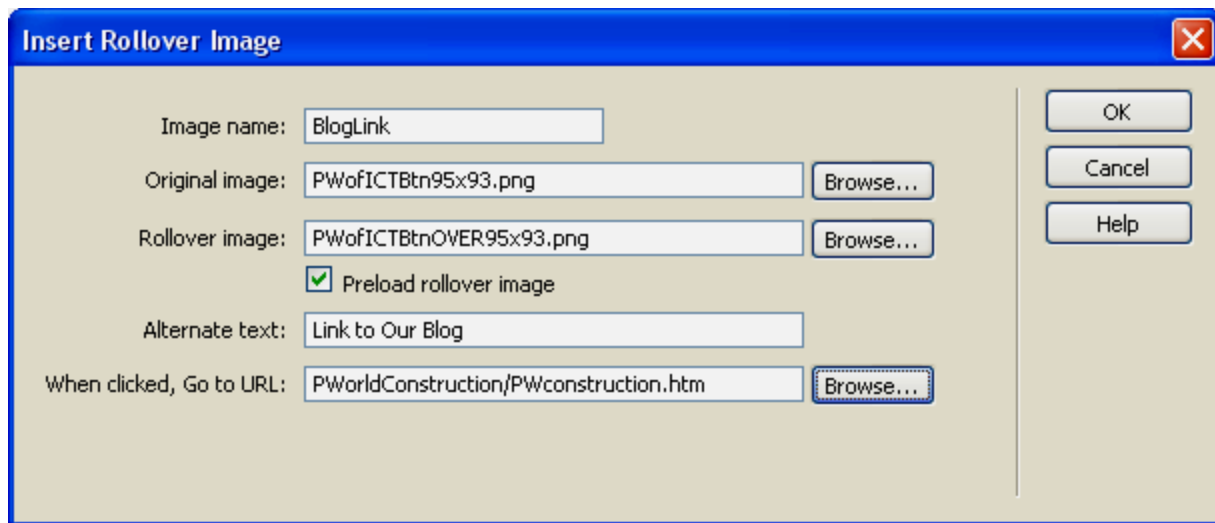
We then do **Insert > Image Objects > Rollover Image** :



HOW TO MAKE A HOMEPAGE IN DREAMWEAVER

We now have to fill in the pop up box:

We have to give our image a name, and then click on the “Browse” buttons to navigate to where our normal image is, and also to where our Rollover image is. We can also type in some alternate text for if any of our images fail to be found. In the final box we put what subpage or external URL want our image to link to.



We then click the OK button.

We can then click the map of the world icon in Dreamweaver, (or press F12), to preview our page in Internet Explorer. We should be able to mouse over the image and have it change color, and then click it and link to our “Under Construction” page:



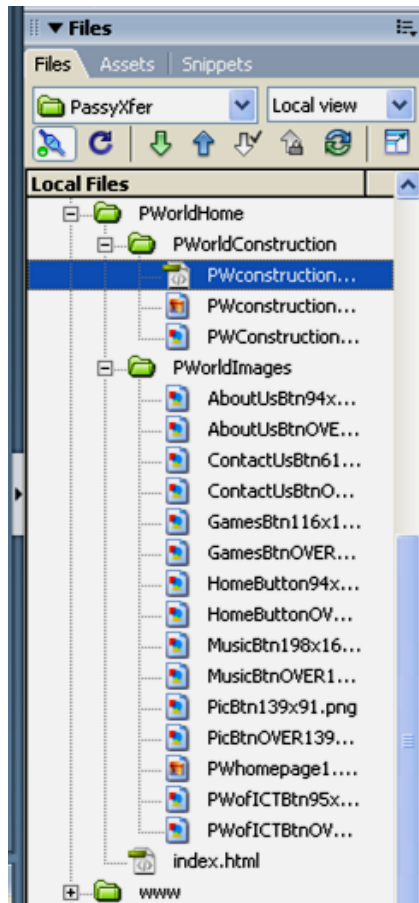
Now all we need to do is make all of our other image rollover links the exact same way.

For the Home Image, since we are already on the Home Page we point it to the same

HOW TO MAKE A HOMEPAGE IN DREAMWEAVER

page and it all seems to work ok.

We also can modify our “Under Construction” page to contain a Rollover Image of the Home Link, so that we can easily get back to the Home Page.



The other important thing is to build a Folder Structure in Dreamweaver where the Top level folder contains the index.html file.

It is important that our homepage is named “index.html”, because this is what our Browser will expect the name to be.

Then under this top level folder we have separate folders for Images, and each of our subpages: UnderConstruction, AboutUs, ContactUs, Games, Music, etc.

If we are part way through building our Homepage, we can reorganize and remake folders, and Dreamweaver will automatically update all the links for us.

(We just need to say yes to the pop up boxes that appear).

We now have a functioning Homepage, and can start building our sub pages.

